

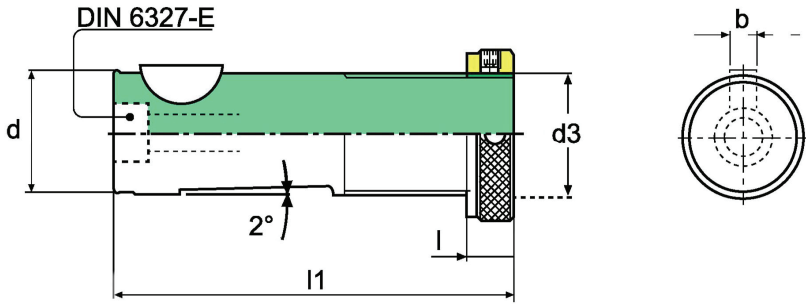


ROSCADO
DIN/6327

PROGRAMA

4

						
PAG. 4	PAG. 4	PAG. 5	PAG. 5	PAG. 6-8	PAG. 9	PAG. 10-12
						
PAG. 13	PAG. 14	PAG. 15	PAG. 15-16	PAG. 16	PAG. 17	PAG. 17
						
PAG. 18						



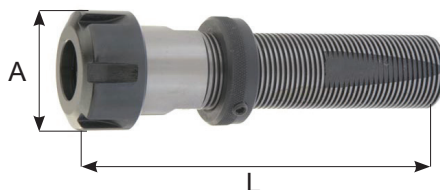
<i>d3</i>	<i>d</i>	<i>l1</i>	<i>b</i>	<i>l</i>
TR8 x 1	8	50	3	10
TR10 x 1.5	10	62	3	12
TR12 x 1.5	12	62	3	12
TR16 x 1.5	16	85	5	12
TR20 x 2	20	88	5	12
TR28 x 2	28	95	6	12
TR36 x 2	36	118	8	18
TR48 x 2	48	144	10	18



DIN/6327

Porta pinzas ER tuerca STANDARD
Collet chucks ER STANDARD nut

TUERCA STANDARD



*Compatible con tuerca standard

REFERENCIA	CAP	L	A
TR16L118ER11 *	1 ÷ 7	118	19
TR16L129ER16 *	1 ÷ 10	129	28
TR20L132ER16 *	1 ÷ 10	132	28
TR28L139ER16 *	1 ÷ 10	139	28
TR20L137ER20 *	1 ÷ 14	137	34
TR28L144ER20 *	1 ÷ 14	144	34

REFERENCIA	CAP	L	A
TR28L143ER25	1 ÷ 20	143	42
TR36L166ER25	1 ÷ 20	166	42
TR28L152ER32	2 ÷ 22	152	50
TR36L170ER32	2 ÷ 22	170	50
TR48L196ER32	2 ÷ 22	196	50
TR28L159ER40	3 ÷ 30	159	63
TR36L182ER40	3 ÷ 30	182	63
TR48L209ER40	3 ÷ 30	209	63

DIN/6327

Porta pinzas ER tuerca MINI
Collet chucks ER MINI nut

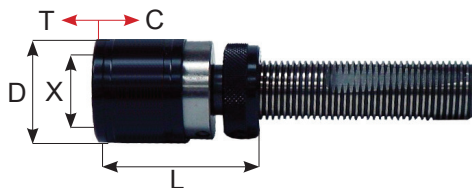
TUERCA MINI



REFERENCIA	CAP	L	A
TR8L75ER8M	1 ÷ 5	75	12
TR10L95ER11M	1 ÷ 7	95	16
TR12L95ER11M	1 ÷ 7	95	16
TR12L103ER16M	1 ÷ 10	103	22
TR16L120ER16M	1 ÷ 10	120	22
TR16L130ER20M	1 ÷ 14	130	28
TR20L135ER16M	1 ÷ 10	135	22
TR20L135ER20M	1 ÷ 14	135	28
TR20L135ER25M	1 ÷ 20	135	35

LINEA TRANSFER

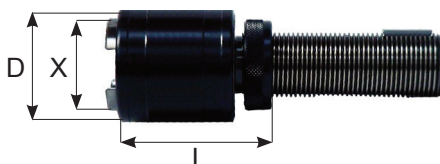
Roscador con compresión y tracción
Quick change tapping chucks with Tension / Compression



REFERENCIA	CAP	X	D	L	C	T
TR16-THTC0-L49	M1 ÷ M10	13	25.5	49	6.5	7.5
TR20-THTC0-L49				49		
TR16-THTC1-L51	M3 ÷ M12	19	36	51	7.5	7.5
TR20-THTC1-L51				51		
TR28-THTC1-L51				51		
TR36-THTC1-L53				53		
TR20-THTC2-L75	M8 ÷ M20	31	53	75	12.5	12.5
TR28-THTC2-L75				75		
TR36-THTC2-L77				77		
TR28-THTC3-L108	M14 ÷ M33	48	78	108	20	20
TR36-THTC3-L110				110		
TR48-THTC3-L114				114		
TR36-THTC4-L121	M22 ÷ M48	60	96	121	22.5	22.5
TR48-THTC4-L125				125		

LINEA TRANSFER

Roscador rígido
Quick change tapping chucks Rigid



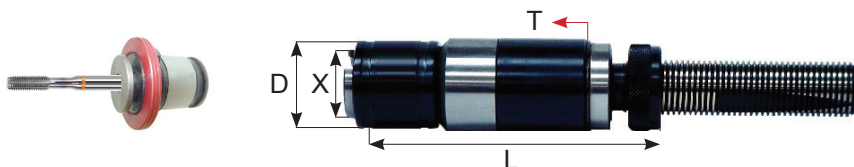
REFERENCIA	CAP	X	D	L
TR16-TLR0-L45	M1 ÷ M10	13	23	45
TR20-TLR0-L45				
TR16-TLR1-L49	M3 ÷ M12	19	32	49
TR20-TLR1-L49				
TR28-TLR2-L66	M8 ÷ M20	31	50	66
TR28-TLR2-L66				
TR36-TLR2-L68				68
TR28-TLR3-L95	M14 ÷ M33	48	72	95
TR36-TLR3-L97				97
TR36-TLR4-L120	M22 ÷ M48	60	95	124
TR48-TLR4-L124				118

**LINEA
TRANSFER**

Roscador rígido con compensación axial
en tracción

*Quick change tapping chucks with compensation Axial
in Tension*

4



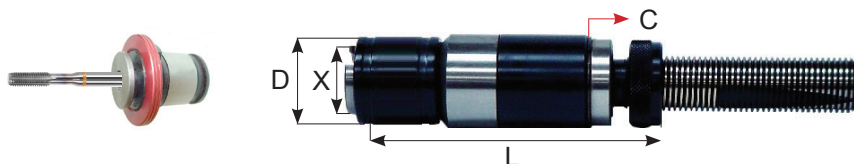
REFERENCIA	CAP	X	D	L	T
TR16-TLT0-30	M1 ÷ M10	13	23	86	30
TR20-TLT0-30				96	30
TR16-TLT1-40	M3 ÷ M12	19	35	108	40
TR20-TLT1-40				108	40
TR28-TLT1-40				118	40
TR20-TLT2-40	M8 ÷ M20	31	50	132	40
TR28-TLT2-40				132	40
TR36-TLT2-40				142	40
TR28-TLT3-40	M14 ÷ M33	48	72	180	40
TR36-TLT3-40				190	40
TR36-TLT4-60	M22 ÷ M48	60	95	235	60
TR48-TLT4-60				239	60



**LINEA
TRANSFER**

**Roscador rígido con compensación axial
en compresión**

*Quick change tapping chucks with compesation Axial
in Compression*



4

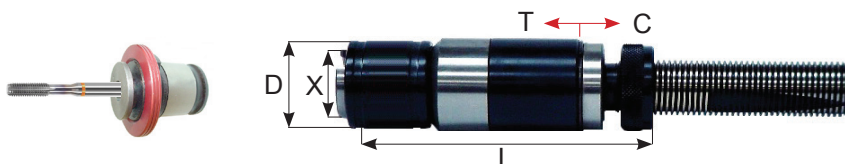
REFERENCIA	CAP	X	D	L	C
TR16-TLC0-20	M1 ÷ M10	13	23	107	20
TR16-TLC0-30				127	30
TR20-TLC0-20				107	20
TR20-TLC0-30				127	30
TR16-TLC1-30	M3 ÷ M12	19	35	139	30
TR16-TLC1-40				159	40
TR20-TLC1-30				139	30
TR20-TLC1-40				159	40
TR28-TLC1-30				139	30
TR28-TLC1-40				159	40
TR20-TLC2-30	M8 ÷ M20	31	50	163	30
TR20-TLC2-40				183	40
TR28-TLC2-30				163	30
TR28-TLC2-40				183	40
TR36-TLC2-30				165	30
TR36-TLC2-40				185	40
TR28-TLC3-30	M14 ÷ M33	48	72	209	30
TR28-TLC3-40				229	40
TR36-TLC3-30				211	30
TR36-TLC3-40				231	40
TR36-TLC4-60	M22 ÷ M48	60	95	295	60
TR48-TLC4-60				299	60





Roscador rígido con compensación axial
en tracción y compresión
*Quick change tapping chucks with compesation Axial
in Tension / Compression*

4

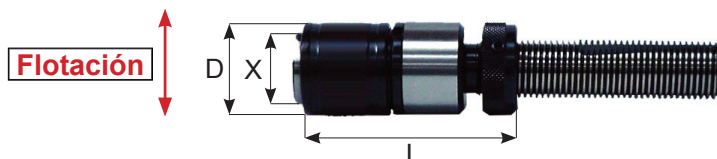


REFERENCIA	CAP	X	D	L	C	T
TR16-TLTC0-20/10	M1 ÷ M10	13	23	117	20	10
TR16-TLTC0-15/15				112	15	15
TR20-TLTC0-20/10				117	20	10
TR20-TLTC0-15/15				112	15	15
TR16-TLTC1-30/10	M3 ÷ M12	19	35	149	30	10
TR16-TLTC1-20/20				139	20	20
TR20-TLTC1-30/10				149	30	10
TR20-TLTC1-20/20				139	20	20
TR28-TLTC1-30/10				149	30	10
TR28-TLTC1-20/20				139	20	20
TR20-TLTC2-30/10	M8 ÷ M20	31	50	173	30	10
TR20-TLTC2-20/20				163	20	20
TR28-TLTC2-30/10				173	30	10
TR28-TLTC2-20/20				163	20	20
TR36-TLTC2-30/10				175	30	10
TR36-TLTC2-20/20				165	20	20
TR28-TLTC3-30/10	M14 ÷ M33	48	72	219	30	10
TR28-TLTC3-20/20				209	20	20
TR36-TLTC3-30/10				221	30	10
TR36-TLTC3-20/20				211	20	20
TR36-TLTC4-40/20	M22 ÷ M48	60	95	275	40	20
TR36-TLTC4-30/30				265	30	30
TR48-TLTC4-40/20				279	40	20
TR48-TLTC4-30/30				269	30	30





Roscador rígido con flotación Radial
Quick change tapping chucks with Floating Radial



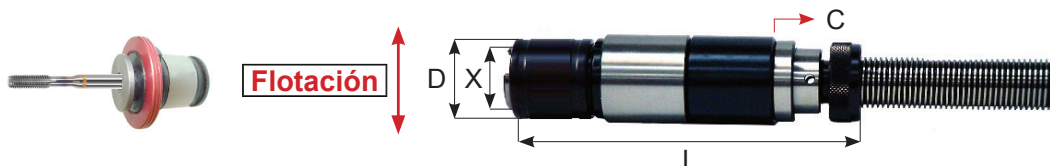
REFERENCIA	CAP	X	D	FLOT	L
TR16-TLRP0-L65	M1 ÷ M10	13	23	0.25	65
TR20-TLRP0-L65					65
TR16-TLRP1-L70	M3 ÷ M12	19	32	0.50	70
TR20-TLRP1-L70					70
TR28-TLRP1-L70					70
TR20-TLRP2-L96	M8 ÷ M20	31	50	1.00	96
TR28-TLRP2-L96					96
TR36-TLRP2-L98					98
TR28-TLRP3-L136	M14 ÷ M33	48	72	1.50	136
TR36-TLRP3-L138					138
TR48-TLRP3-L142					142
TR36-TLRP4-L167	M22 ÷ M48	60	95	2.00	167
TR48-TLRP4-L171					171



**LINEA
TRANSFER**

Roscador rígido con compensación axial
en compresión y flotación radial
*Quick change tapping chucks with compensation Axial
in Compression and Floating Radial*

4



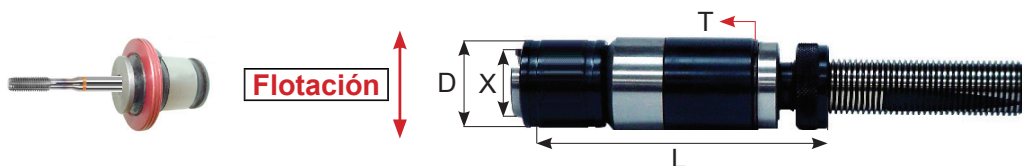
REFERENCIA	CAP	X	D	L	FLOT	C
TR16-TLCP0-20	M1 ÷ M10	13	23	129	0.25	20
TR16-TLCP0-30				149		30
TR20-TLCP0-20				129		20
TR20-TLCP0-30				149		30
TR16-TLCP1-30	M3 ÷ M12	19	35	154	0.50	30
TR16-TLCP1-40				174		40
TR20-TLCP1-30				154		30
TR20-TLCP1-40				174		40
TR28-TLCP1-30				154		30
TR28-TLCP1-40				174		40
TR20-TLCP2-30	M8 ÷ M20	31	50	188	1.00	30
TR20-TLCP2-40				208		40
TR28-TLCP2-30				188		30
TR28-TLCP2-40				208		40
TR36-TLCP2-30				190		30
TR36-TLCP2-40				210		40
TR28-TLCP3-30	M14 ÷ M33	48	72	244	1.50	30
TR28-TLCP3-40				264		40
TR36-TLCP3-30				246		30
TR36-TLCP3-40				266		40
TR36-TLCP4-60	M22 ÷ M48	60	95	342	2.00	60
TR48-TLCP4-60				346		60



**LINEA
TRANSFER**

Rosgador rígido con compensación axial
en tracción y flotación radial

*Quick change tapping chucks with compensation Axial
in Tension and Floating Radial*



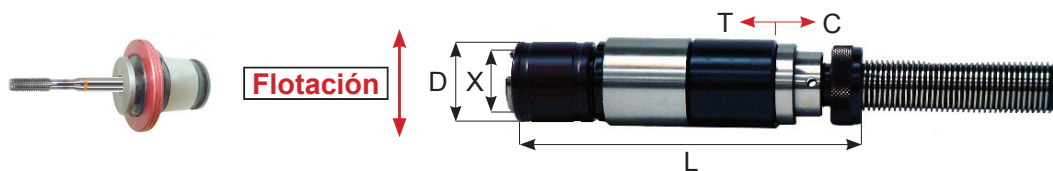
REFERENCIA	CAP	X	D	L	FLOT	T
TR16-TLTP0-30	M1 ÷ M10	13	23	119	0.25	30
TR20-TLTP0-30				119		30
TR16-TLTP1-40	M3 ÷ M12	19	35	134	0.50	40
TR20-TLTP1-40				134		40
TR28-TLTP1-40				134		40
TR20-TLTP2-40	M8 ÷ M20	31	50	168	1.00	40
TR28-TLTP2-40				168		40
TR36-TLTP2-40				170		40
TR28-TLTP3-40	M14 ÷ M33	48	72	224	1.50	40
TR36-TLTP3-40				226		40
TR36-TLTP4-60	M22 ÷ M48	60	95	282	2.00	60
TR48-TLTP4-60				286		60





Rosgador rígido con compensación axial en tracción / compresión y flotación radial
 Quick change tapping chucks with compensation Axial in Tension / Compression and Floating Radial

4

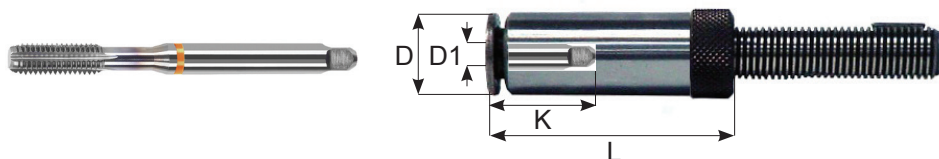


REFERENCIA	CAP	X	D	L	FLOT	C	T
TR16-TLTCP0-20/10	M1 ÷ M10	13	23	139	0.25	20	10
TR16-TLTCP0-15/15				134		15	15
TR20-TLTCP0-20/10				139		20	10
TR20-TLTCP0-15/15				134		15	15
TR16-TLTCP1-30/10	M3 ÷ M12	19	35	164	0.5	30	10
TR16-TLTCP1-20/20				154		20	20
TR20-TLTCP1-30/10				164		30	10
TR20-TLTCP1-20/20				154		20	20
TR28-TLTCP1-30/10				164		30	10
TR28-TLTCP1-20/20				154		20	20
TR20-TLTCP2-30/10	M8 ÷ M20	31	50	198	1.0	30	10
TR20-TLTCP2-20/20				188		20	20
TR28-TLTCP2-30/10				198		30	10
TR28-TLTCP2-20/20				188		20	20
TR36-TLTCP2-30/10				200		30	10
TR36-TLTCP2-20/20				190		20	20
TR28-TLTCP3-30/10	M14 ÷ M33	48	72	254	1.5	30	10
TR28-TLTCP3-20/20				244		20	20
TR36-TLTCP3-30/10				256		30	10
TR36-TLTCP3-20/20				246		20	20
TR36-TLTCP4-40/20	M22 ÷ M48	60	95	322	2.0	40	20
TR36-TLTCP4-30/30				312		30	30
TR48-TLTCP4-40/20				326		40	20
TR48-TLTCP4-30/30				316		30	30



LINEA TRANSFER

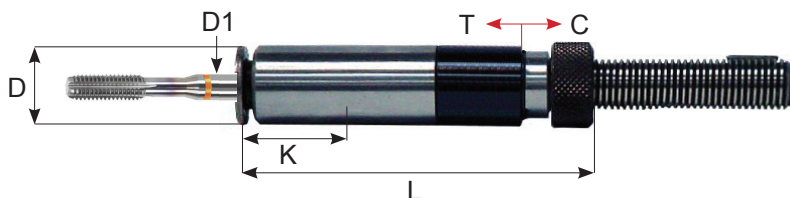
Cabecilla rígida mango roscado
Quick change tapping chuck with threaded shank



REFERENCIA	CAP	D1	K	D	L
TR10-TL0-L44	M1 ÷ M10	2.5 - 7.2	15	14	44
TR12-TL0-L44			15	14	44
TR12-TL1-L52	M3 ÷ M12	4.5 - 11.3	17	19	52
TR16-TL1-L52			17	19	52
TR20-TL2-L77	M8 ÷ M20	7 - 18	30	31	77
TR28-TL2-L77			30	31	77
TR28-TL3-L95	M8 ÷ M20	11 - 28	44	48	95
TR36-TL3-L97			44	48	97
TR36-TL4-L132	M8 ÷ M20	18 - 36	71	60	132
TR48-TL4-L136			71	60	136

LINEA TRANSFER

Cabecilla con compensación axial en compresión y tracción
Quick change tapping chuck with threaded shank with compensation Axial in Tension / Compression



REFERENCIA	CAP	D1	K	D	L	C	T
TR8	M1 ÷ M6	2.5 - 6	15	13.5	109	20	0
					104	15	5
					99	10	10
					94	5	15
					89	0	20
TR10	M1 ÷ M8	2.5 - 8	17	15.5	116	20	0
					111	15	5
					106	10	10
					101	5	15
					96	0	20
TR12	M4 ÷ M12	4.5 - 10	17	19	107	20	0
					102	15	5
					97	10	10
					92	5	15
					87	0	20

**LINEA
TRANSFER**

Cabecilla con compensación axial en compresión y tracción
con embrague de seguridad

Quick change tapping chuck with threaded shank with
compensation Axial in Tension / Compression and safety clutch



REFERENCIA	CAP	D1	K	D	L	C	T
TR8S	M1 ÷ M6	2.5 - 6	15	13.5	109	20	0
					104	15	5
					99	10	10
					94	5	15
					89	0	20
TR10S	M1 ÷ M8	2.5 - 8	17	15.5	116	20	0
					111	15	5
					106	10	10
					101	5	15
					96	0	20
TR12S	M4 ÷ M12	4.5 - 10	17	19	107	20	0
					102	15	5
					97	10	10
					92	5	15
					87	0	20



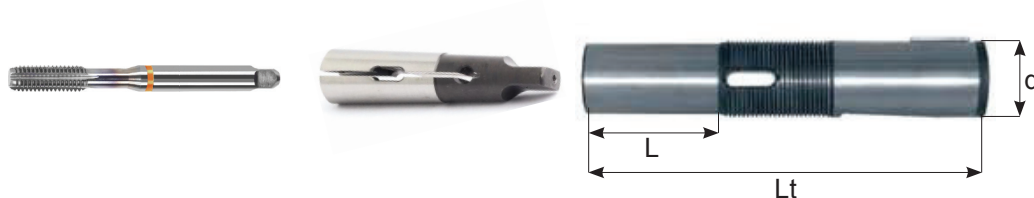
Casquillo de regulación corto
Adjustable Adaptors



4

REFERENCIA	d	L	Lt
E16CM1	16	40	85
E20CM1	20	40	88
E28CM1	28	42	95
E28CM2	28	42	95
E36CM1	36	50	118
E36CM2	36	50	118
E36CM3	36	50	118
E48CM2	48	65	144
E48CM3	48	65	144
E48CM4	48	65	144

Casquillo de regulación largo
Adjustable Adaptors



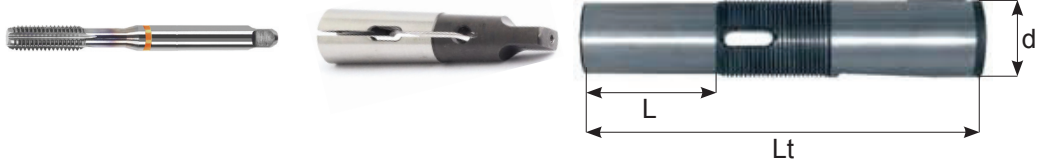
REFERENCIA	d	L	Lt
G16CM125	16	25	110
G16CM150		50	135
G16CM175		75	160
G16CM1100		100	185
G20CM125	20	25	113
G20CM150		50	138
G20CM175		75	163
G20CM1100		100	188
G28CM125	28	25	120
G28CM150		50	145
G28CM175		75	170
G28CM1100		100	195

G28 / 36 / 48 →

Casquillo de regulación largo
Adjustable Adaptors



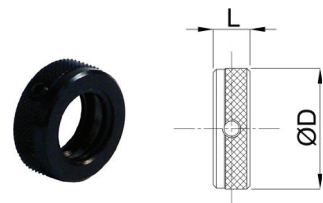
4



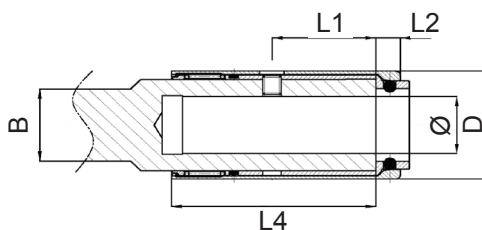
REFERENCIA	d	L	Lt
G28CM225	28	25	120
G28CM250		50	145
G28CM275		75	170
G28CM2100		100	195
G36CM230	36	30	148
G36CM260		60	178
G36CM290		90	208
G36CM2120		120	238
G36CM330	36	30	148
G36CM360		60	178
G36CM390		90	208
G36CM3120		120	238
G48CM340	48	40	184
G48CM380		80	224
G48CM3120		120	264
G48CM3160		160	304
G48CM440	48	40	184
G48CM480		80	224
G48CM4120		120	264
G48CM4160		160	304

Tuerca regulación
Regulating Nut

REFERENCIA	PASO	D	L
GH10	TR 10x1.5	16	12
GH12	TR 12x1.5	20	12
GH16	TR 16x1.5	24.6	12
GH20	TR 20x2	31.6	12
GH28	TR 28x2	39.6	12
GH36	TR 36x2	49.6	14
GH48	TR 48x2	66.6	18



Manguito cambio rápido DIN/55058
Quick change drilling chucks.

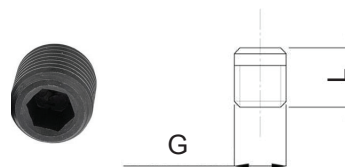


4

REFERENCIA	Ø	B	D	L1	L2	L4	M
RCTL12	12	20	24	22	9	42	M 5
RCTL16	16	25	30	34	9.5	65	M 6
RCTL20	20	32	38	34	11	72	M 6
RCTL25	25	37	45	38	12	79	M 8
RCTL28	28	40	48	38	12	81	M 8
RCTL32	32	45	55	45	14	83	M 8
RCTL36	36	50	60	45	16	99	M 8
RCTL48	48	67	80	57	20	100	M10

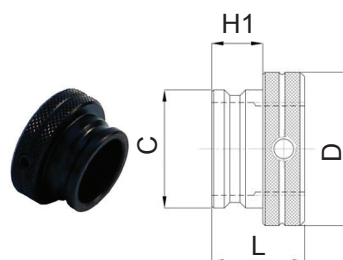
Tornillo para manguito cambio rápido
Screw Quick change drilling chucks

REFERENCIA	Ø	G	L
RCTL5S	12	M5	4
RCTL6S	16 - 20	M6	5.5
RCTL8S	25 - 28	M8	6.9
RCTL8LS	32 - 36	M8	7.5
RCTL10S	48	M10	9.5



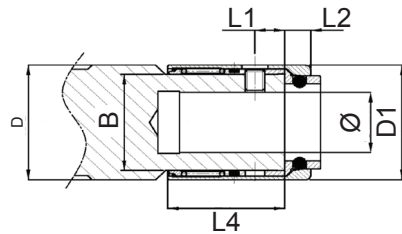
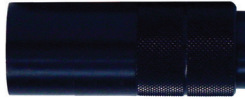
Tuerca cambio rápido
Quick change adjustable nut and reduced

REFERENCIA	CAP	D	C	H1	L
CRM12	TR 12x1.5	21.5	16.4	9	18
CRM16	TR 16x1.5	26	19.9	9.5	18.5
CRM20	TR 20x2	33	25.4	11	20
CRM25	TR 25x2	40	31.9	12	22
CRM28	TR 28x2	42	33.9	12	22
CRM32	TR 32x2	47	37.9	13.5	23.5
CRM36	TR 36x2	54	43.4	16	26
CRM48	TR 48x2	72	57.9	20	34



Manguito cambio rápido corto DIN/55058
Quick change drilling chucks.

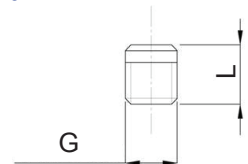
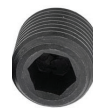
4



REFERENCIA	Ø	B	D	D1	L1	L2	L4	M
RRCTL16	16	22	25	27	8	9.5	30	M 6
RRCTL20	20	28	32	34	8	11	30	M 6
RRCTL25	25	34.5	37	41	8	12	32	M 8
RRCTL28	28	37	40	44	8	12	32	M 8
RRCTL32	32	41	45	49	9	13.5	39	M 8
RRCTL36	36	46	50	55	9	16	39	M 8
RRCTL48	48	61	67	73	11	20	51	M10

Tornillo para manguito cambio rápido corto
Screw Quick change drilling chucks short

REFERENCIA	Ø	G	L
RRCTL5S	16 - 20	M5	4
RRCTL6S	25 - 28 - 32 - 36	M6	5.5
RRCTL8S	48	M8	7.5



Tuerca cambio rápido
Quick change adjustable nut and reduced

REFERENCIA	CAP	D	C	H1	L
CRM12	TR 12x1.5	21.5	16.4	9	18
CRM16	TR 16x1.5	26	19.9	9.5	18.5
CRM20	TR 20x2	33	25.4	11	20
CRM25	TR 25x2	40	31.9	12	22
CRM28	TR 28x2	42	33.9	12	22
CRM32	TR 32X2	47	37.9	13.5	23.5
CRM36	TR 36x2	54	43.4	16	26
CRM48	TR 48x2	72	57.9	20	34

